

## OBSERVATIONS

- 1) Before installing the fan unit make sure that the voltage (V) and the frequency (Hz) indicated on the rating label correspond to the voltage and frequency of the mains supply at the point of installation.
- 2) The rating label and technical data are located in the interior of the product.
- 3) This fan unit is supplied with all accessories required for wall or window installation.
- 4) The electrical installation must include a bipolar switch with a distance between contacts of at least 3 mm.
- 5) The fan is a class II appliance and does not require any earth connection.
- 6) If you observe any damage to the product on purchase or it does not function correctly, use the enclosed guarantee certificate and present it, together with proof of purchase, to any of our authorized technical service centres.
- 7) Make sure that the ventilation is appropriate, especially when the extractor is used in conjunction with an appliance with a combustion chamber.

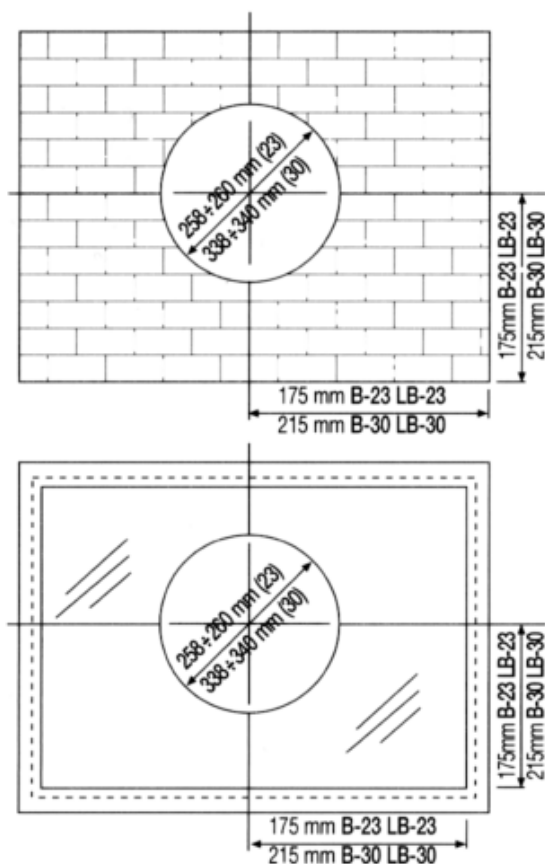


DIAGRAM (1)

## WALL OR WINDOW INSTALLATION

- 1) Cut a hole as indicated in diagram (1).
- 2) Dismantle the fan unit by proceeding as follows:
  - 2-1 Remove the screws from the front grille (A) to release it from the body of the fan unit (B).
  - 2-2 Loosen the 4 screws that fix the fan body (B) to the window support ring (C).
  - 2-3 Remove the 4 screws that join the two intermediate window support plates (D) and the window support ring (C).
- 3-1 Place the window support ring (D) and the rear grille in the hole made in the glass or partition from the rear and fix it in place using the tabs (E) (there are clasps on the glass support) to firmly anchor the window support in the hole.
- 3-2 Place the window support ring (C) on the inside of the glass and screw it to the window support plate (D) using the 4 screws (F).
- 4-1 Place the body of the fan unit (B) in position and screw it to the window support ring (C) using the 4 screws (G).
- 4-2 Remove the cover from the cable entry (H) and carefully cut a suitable hole in it. Thread the connection cable through the hole until it reaches the connection box cover (I).
- 4-3 Remove the screws (J) from the connection box cover (I) and connect the cable to the terminal strip (K) as shown in the corresponding wiring diagram.
- 4-4 Position the covers on the cable entry point (H) and the connection box (I) and replace the screws (J).
- 4-5 Replace the front grille (A) and fix it in place using the 4 screws (L).

## WALL ASSEMBLY

- 2-1 Remove the 4 screws from the front grille (A) to free it from the fan body (B).
- 2-2 Loosen the 4 screws that fix the fan body (B) to the window support ring (C).
- 2-4 Place the glass support mounting ring (C) on the wall and fix it in place by inserting the 4 screws (M) through the holes provided in the mounting ring. Make sure that the mounting ring is placed so that the holder (O) is uppermost as it will then anchor the fan unit body (B).
- 4-1 Place the fan body (B) in position and screw it to the window support ring (C) using the 4 screws (G).
- 4-2 Remove the cover from the cable entry (H) and carefully cut a hole in it. Thread the connection cable through the hole until it reaches the connection box cover (I).

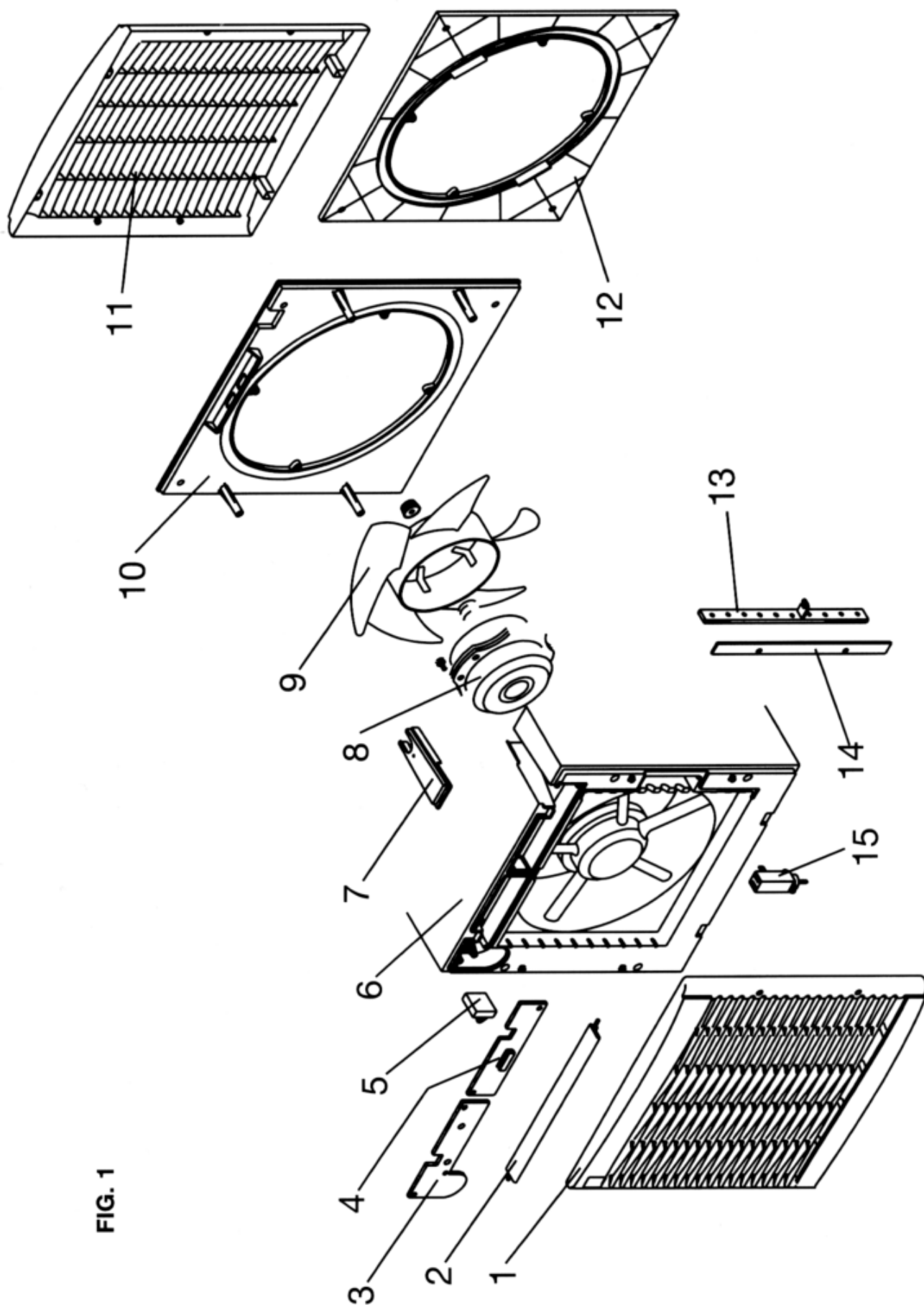
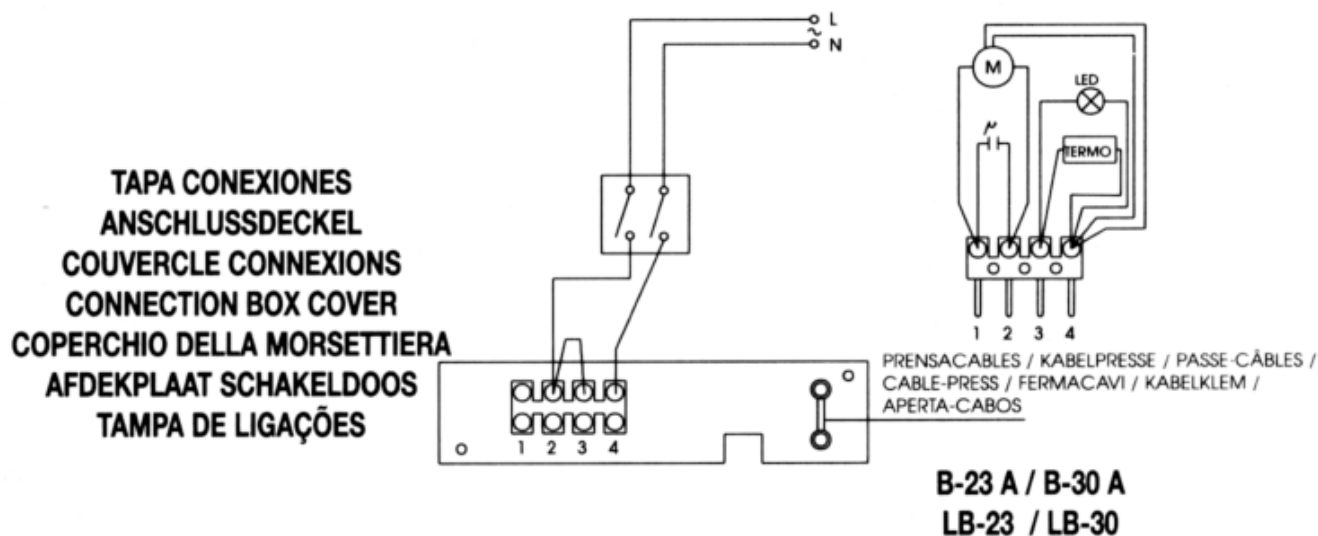
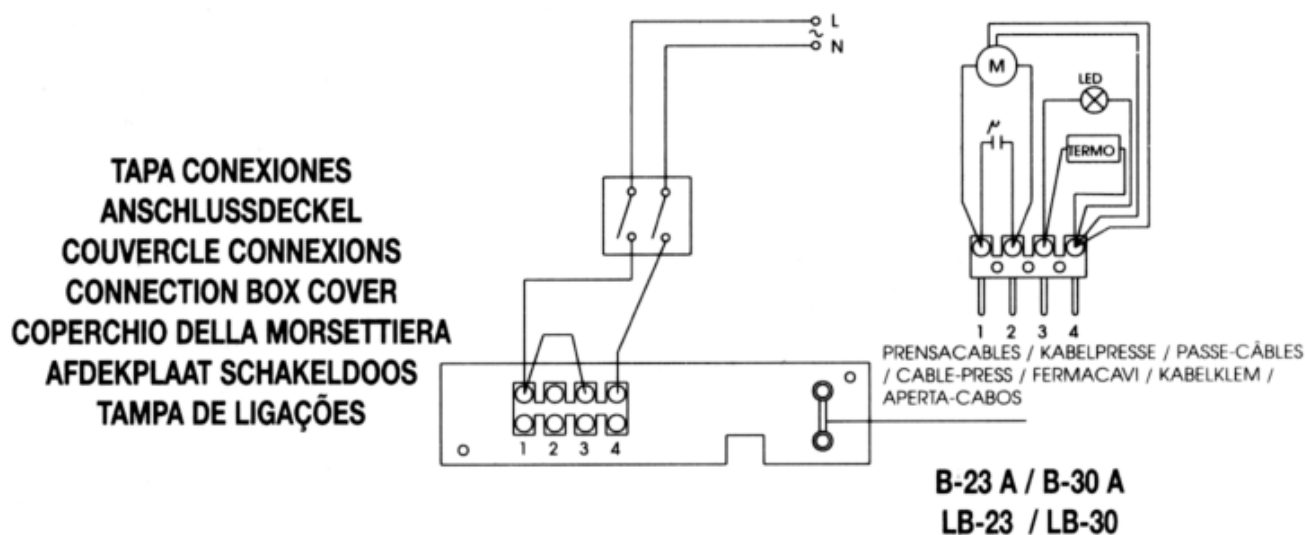


FIG. 1

0 IMPULSION / IMPULSION / IMPULSION / IMPULSION / VENTILAZIONE / AANZUIGER / IMPULSÃO



1 EXTRACCION / EXTRACTION / EXTRACTION / EXTRACTION / ASPIRAZIONE / AANDRIJVING / EXTRACÇÃO



A

ESQUEMA SIN HYGRO SIN INTERRUPTOR RA/C 23/30  
CON INTERRUPTOR DE 3 POSICIONES  
PUEDE FUNCIONAR EXTREYENDO AIRE E INTRODUCIENDO AIRE

SCHEMA OHNE HYGROMETER OHNE SCHALTER RA/C 23/30  
MIT DREISTUFIGEM SCHALTER KANN FUNKTIONIEREN  
INDEM LUFT ENTZOGEN ODER ZUGEFÜHRT WIRD

SCHÉMA SANS HYGRO NI INTERRUPTEUR RA/C 23/30  
AVEC INTERRUPTEUR 3 POSITIONS  
PEUT FONCTIONNER EN MODE EXTRACTION ET EN MODE IMPULSION

DIAGRAM WITHOUT HYGRO WITHOUT SWITCH RA/C 23/30  
WITH 3 POSITIONS SWITCH  
CAN WORK EXTRACTING AND INTRODUCING AIR

SCHEMA SENZA IGROMETRO E SENZA INTERRUPTORE RA/C  
23/30

CON INTERRUPTORE A 3 POSIZIONI  
PUÒ FUNZIONARE ASPIRANDO E INTRODUCENDO ARIA

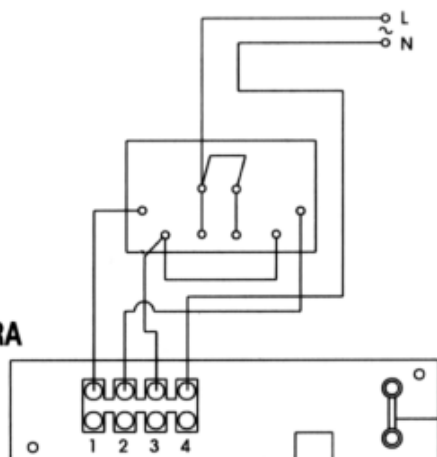
SCHEMA ZONDER HYGRO EN SCHAKELAAR RA/C 23/30  
SCHAKELAAR MET 3 STANDEN

KAN WERKEN ZOWEI MET AFVOER EN AANVOER VAN LUCHT

ESQUEMA SEM HYGRO SEM INTERRUPTOR RA/C 23/30

COM INTERRUPTOR DE POSIÇÕES  
PODE FUNCIONAR EXTRAINDO AR E INTRODIZINDO AR

TAPA CONEXIONES  
ANSCHLUSSDECKEL  
COUVERCLE CONNEXIONS  
CONNECTION BOX COVER  
COPERCHIO DELLA MORSETTIERA  
AFDEKPLAAT SCHAKELDOOS  
TAMPA DE LIGAÇÕES



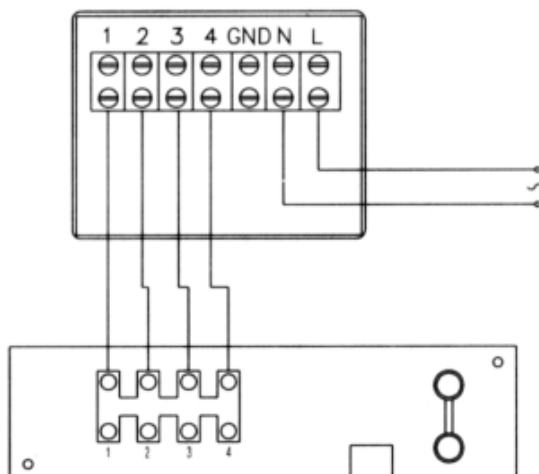
PRENSACABLES / KABELPRESSE / PASSE-CÂBLES /  
CABLE-PRESS / FERMACAVI / KABELKLEM /  
APERTA-CABOS

B-23 A / B-30 A  
LB-23 / LB-30

B

ESQUEMA SIN HYGRO CON INTERRUPTOR RA/C 23/30  
SCHEMA OHNE HYGROMETER MIT SCHALTER RA/C 23/30  
SCHÉMA SANS HYGRO AVEC INTERRUPTEUR RA/C 23/30  
DIAGRAM WITHOUT HYGRO WITH SWITCH RA/C 23/30  
SCHEMA SENZA IGROMETRO CON INTERRUPTORE RA/C 23/30  
SCHEMA ZONDER HYGRO EN MET SCHAKELAAR RA/C 23/30  
DIAGRAMA SEM HYGRO COM INTERRUPTOR RA/C 23/30

TAPA CONEXIONES  
ANSCHLUSSDECKEL  
COUVERCLE CONNEXIONS  
CONNECTION BOX COVER  
COPERCHIO DELLA MORSETTIERA  
AFDEKPLAAT SCHAKELDOOS  
TAMPA DE LIGAÇÕES



PRENSACABLES / KABELPRESSE / PASSE-CÂBLES /  
CABLE-PRESS / FERMACAVI / KABELKLEM /  
APERTA-CABOS

B-23 RA/C  
B-30 RA/C

- 4-3 Remove the screws (J) from the connection box cover (I) and connect the cable to the terminal strip (K) as shown in the corresponding wiring diagram.
- 4-4 Position the covers on the cable entry point (H) and the connection box (I) and replace the screws (J).
- 4-5 Replace the front grille (A) and fix it in place using the 4 screws (L).

**The B-23 or B-30 fan unit has several modes of operation:**

Exhaust (5 speeds)

Intake (5 speeds)

Fan stopped with only the shutters open.



All these possibilities of the fan unit are only available if fitted with a RA/C 23/30 switch.

The shutter opening is controlled by a delay timer. They take about 20 seconds to fully open after power is connected to the motor.

**B-23 or B-30 WITH RA/C 23/30 SWITCH DIAGRAM (B)**

4 wires from the RA/C 23/30 switching unit to the connection in the B-23 or B-30 fan (connection cover - strip) as shown in diagram B). The RA/C 23/30 switch also requires two power supply cables and an earth connection to eliminate any interference.

- Switch 1 in position ( I ) and commutator 3 in position ( 0 ) activates the delayed opening of the moveable blind and turns on the signalling light.

- Switch 2 (   ) starts the motor in extraction or impulse mode.

- Commutator 3 varies the speed, choosing one of the five settings.

The fan should be connected with a short flexible cord to the fixed installation, via the fixed installation the switch has to be connected, and the switch should be connected to the supply of the fixed installation.

The switch box RA/C 23/30 has to be connected to fixed installation by means of a conduit or cable.

**B-23 or B-30 WITHOUT RA/C 23/30 SWITCH**

Connect the B-23 or B-30 fan unit without the RA/C 23/30 switch as shown in diagram A. Use a two-position double switch.

B-23 or B-30 (extractor function) according to diagram no. 1.

B-23 or B-30 (blower function) according to diagram no. 0.

The fan should be connected with a short flexible cord to the fixed installation. In the supply should be a switch double pole contact separation of 3 mm.

**ELECTRICAL CONNECTION LB-23 LB-30**

Connect the as shown in diagram A. Use a two-position double switch.

(extractor function) according to diagram no. 1.

(blower function) according to diagram no. 0.

The fan should be connected with a short flexible cord to the fixed installation. In the supply should be a switch double pole contact separation of 3 mm.

**MAINTENANCE**

- Cleaning

Before any type of operation, always make sure that the electrical cord is disconnected and the switch is in the off position.

Clean the external part with a mild, liquid detergent and avoid the use of abrasive cleaning products.

**Fig. 1**

1 - Front grid	6 - Housing	11 - Exterior grille
2 - Shutters	7 - Cable cover	12 - Outer ring
3 - Circuit cover	8 - Motor	13 - Connection piece
4 - Connection box cover	9 - Fan blades	14 - Mechanism cover
5 - Condenser	10 - Inner ring	15 - Thermal-switch

FIG. 2

