

# TPS25/80 Operating Manual

## COMMERCIAL GRADE CIRCULATION PUMP



### 1. Information about this manual

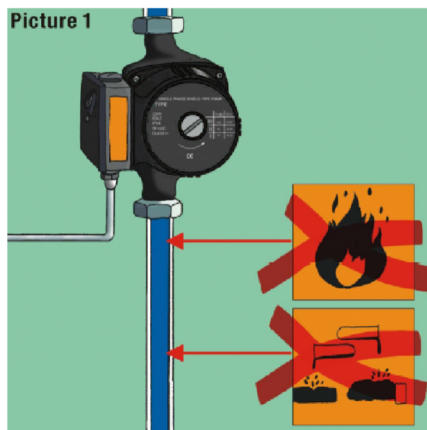
Read this manual completely and carefully before starting to use this device. The manual contains important information about the intended use of the device. Especially observe the safety notes. Keep the manual for later consultation. If you hand over the device to other persons for use, please hand over the operating manual as well.

### 2. Safety Instructions

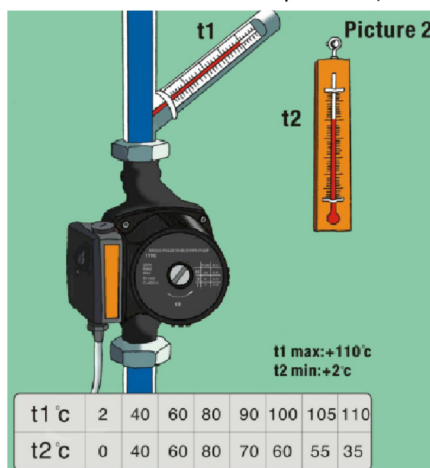
- This device is not a toy, do not allow children to play with it
- Do not leave packaging material lying around, as it can be dangerous in the hands of a child
- Do not open the device; it does not contain any components that need to be serviced by the user. In the event of an error, please return the device.

### 3. Conditions of Operation

Ensure the bearing of the pump is lubricated with water, running the pump without water cannot exceed 10 seconds. As shown in Picture 1.

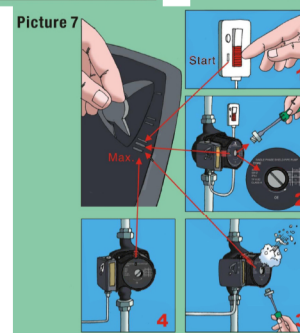
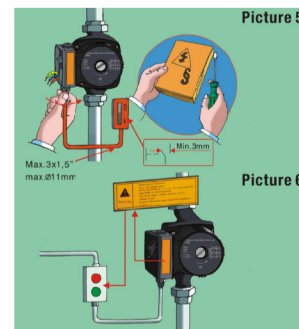
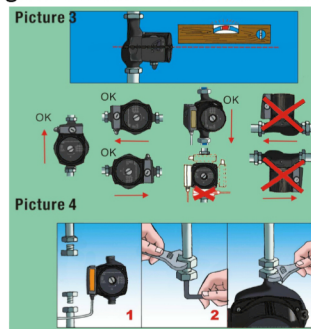


The temperature of the pumping liquid of the motor pump must always be higher than that of the ambient temperature, as shown in Picture 2.



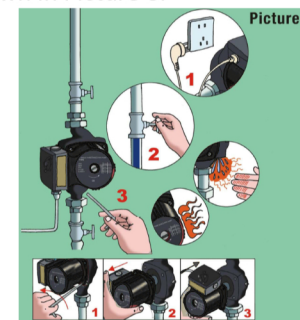
### 4. Installation

- Pump must be installed in a horizontal position, shown in Picture 3.
- The pump must be installed according to the procedures shown in Picture 4.
- WARNING!** Be careful working with Electricity, if necessary use an Electrician to install the pump under local regulations. Shown in Picture 5.
- Read all warning labels carefully before installation. As shown in Picture 6.
- Once the pump has been installed it will need to be deflated before using for the first time. Shown in Picture 7.



### 5. Maintenance and Repair

- WARNING!** If the power cord is damaged this must be replaced immediately to avoid danger. Please follow all other maintenance procedures as shown in Picture 8.



### 6. Diagnostic List

Common Issues	Causes of Issues	Remedy
Pump wont start up	Power supply is not well connected.	Check that the fuse or the plug has not come loose.
	Electric capacitor is damaged.	Replace electric capacitor.
	Bearing blocked the pump's running.	Make it run in a high speed in a short time or loosen the rator with a screwdriver at the end of the shaft
	There is impurity in the pump	Disconnect pump to clean it
There is noise in the system	The pump flow is too high	Change pump to a lower speed
	There is gas in the pump	Release the gas
There is noise in the pump	There is gas in the pump	Release the gas
	The inlet hydraulic pressure is too low	Increase the hydraulic pressure of inlet or check gas volume in the enlarged shot.